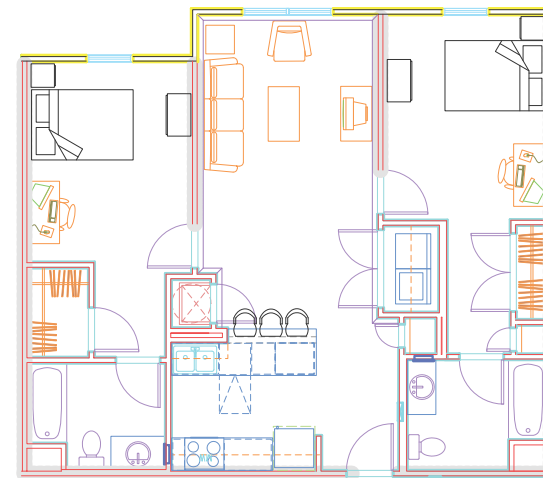
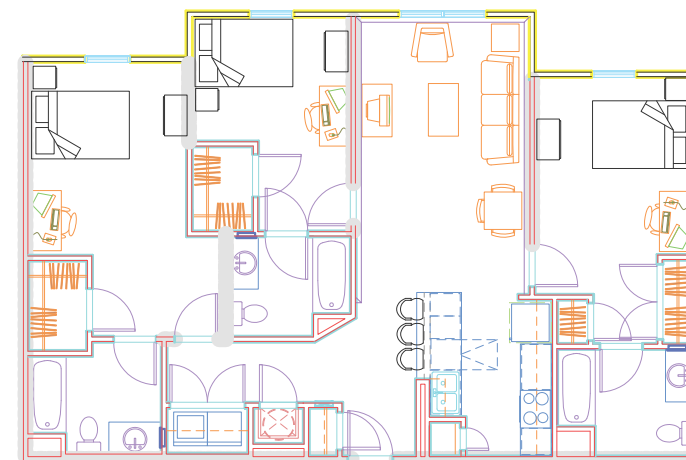


A1



B1



C1

### Property Amenities

- 1, 2 and 3 Bedroom Units
- Private Bedrooms and Private Bathrooms
- Fully Furnished Apartments
- High Speed Internet Access
- Full-Size Kitchen Appliances
- Full-Size Washer and Dryer in Every Apartment
- Ceiling Fans in Bedrooms and Common Areas
- Generous Closet Space in Every Apartment
- Electronic Access Control in Common Areas and Apartments

### Community Amenities

- Clubhouse and Recreation Facilities
- Fitness Center with State-of-the-Art Equipment
- Clubroom with Plasma TV's
- Courtyard w/ Pool, Fountain & Gazebo
- Garage Parking (Spaces Limited)
- On-Site Professional Management Team
- On-Site Professional Maintenance
- Roommate Matching Service
- Recycling Center

### EarthCraft™ Design:

Campus Crossings at Briarcliff is committed to saving energy and reducing the impact of the property on the environment. EarthCraft™ is a green building program that serves as a blueprint for healthy and comfortable residential housing that reduces utility bills and protects the environment. Building guidelines address energy efficiency, durability, indoor air quality, resource efficiency, waste management, and water conservation.

# Smart.Living.

Campus Crossings at Briarcliff provides an exciting new housing opportunity for Graduate Students at Emory University to live in an affordable and private community designed specifically with your needs in mind.

With state-of-the-art amenities and a unique mix of comfortable and spacious floor plans along with a sustainable EarthCraft™ designation, Campus Crossings at Briarcliff will be an extraordinary new addition to Emory University's housing options.

